

# BRP-ROTAX CHASSIS APPROVAL FORM



MANUFACTURER	OMAPS-CKR
CHASSIS MODEL	CKR SG3 DD2
CATEGORY	Rotax MAX Challenge
VALITY OF APPROVAL	without limitation
DATE OF APPROVAL (by BRP-Powertrain)	(to be filled in by BRP-Powertrain)

## Technical definiton of the frame

Built according to CIK regualtions for short circuits karts

## Technical definition of the components of the chassis

<b>Brake system:</b>	Designed according to CIK rules for shifter classes. A brake system with a valid CIK Homologation must be used.
<b>Bodywork:</b>	Designed according to CIK rules for short circuit karts. A bodywork with a valid CIK Homologation must be used.



Photo from above of the frame.  
(without any mounted part)



Photo of the identification plate of the frame  
with the name of the chassis model.

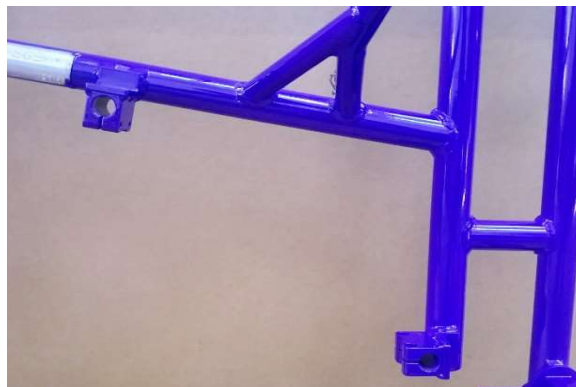
Technical description:	Dimensions		Tolerance
Outer diameter of the main tubes (without painting):	mm 32	mm	+/- 0,5 mm
Rear width of main tubes (center line to center line):	mm 637	mm	+/- 0,5 mm
Distance of the rear two main tubes on the right side:	mm 92	mm	+/- 0,5 mm
Wheelbase:	mm 1040	mm	+/- 0,5 mm

Technical description	Figure	
Number of adjustable/removeable stabilizers at the frame:	1	
Chassis designed for rear ride height adjustment: (YES or NO)	YES	



**Photo from above of the frame with the section of the engine mount.**

The exhaust system must be fitted with the two original rubber buffers.  
(As supplied with the engine package.)

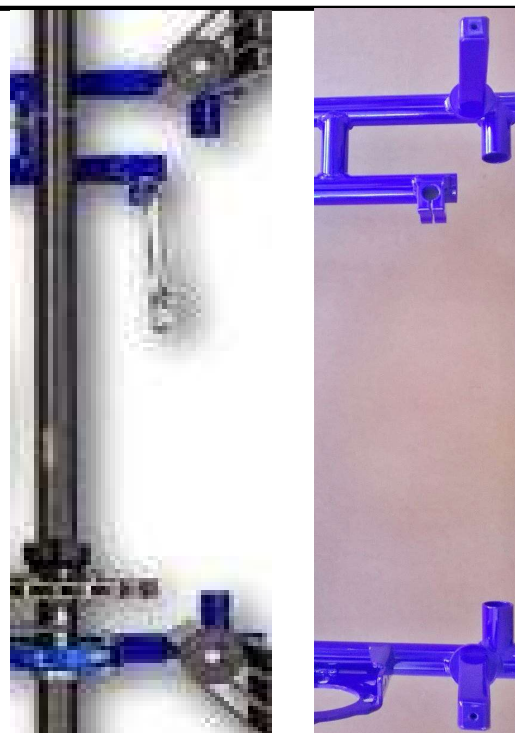


**Photo from above of the frame with the section of the two supports for the exhaust system.**

The radiator has to be tilted back from vertical position  $25^{\circ} \pm 5^{\circ}$ . The highest point of the radiator with cap may not be higher than 400 mm above the main tube of the kart chassis.



**Foto of the frame from the side with the section of the supports for the radiator. (radiator mounted)**



**Photo from above of the frame with the section of the two supports for the RTPS (Rear Tire Protection Sytstem).**

Technical definition of the components of the chassis

<b>Rear Tire Protection System: (RTPS)</b>	For the participation at a national or international ROTAX MAX Challenge race, the Rotax Rear Tire Protection System must be used.
--	--

The indicated measurement of the following two sketches must be respected:

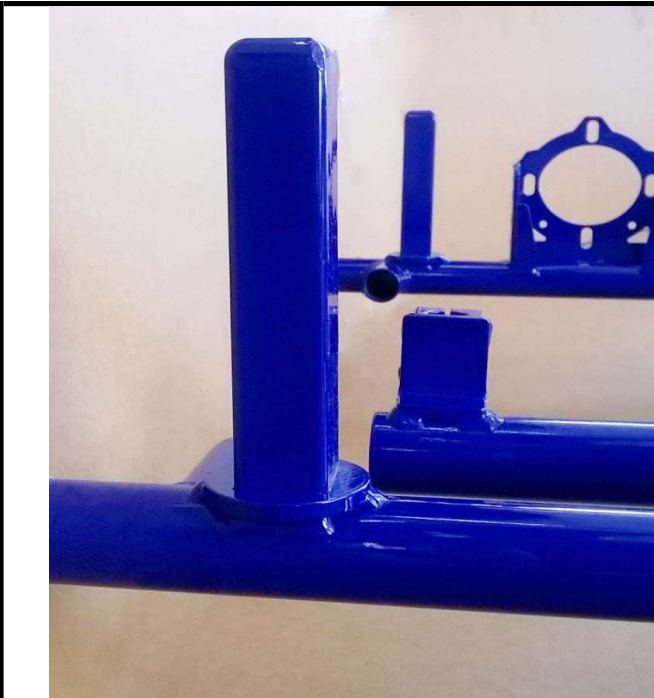
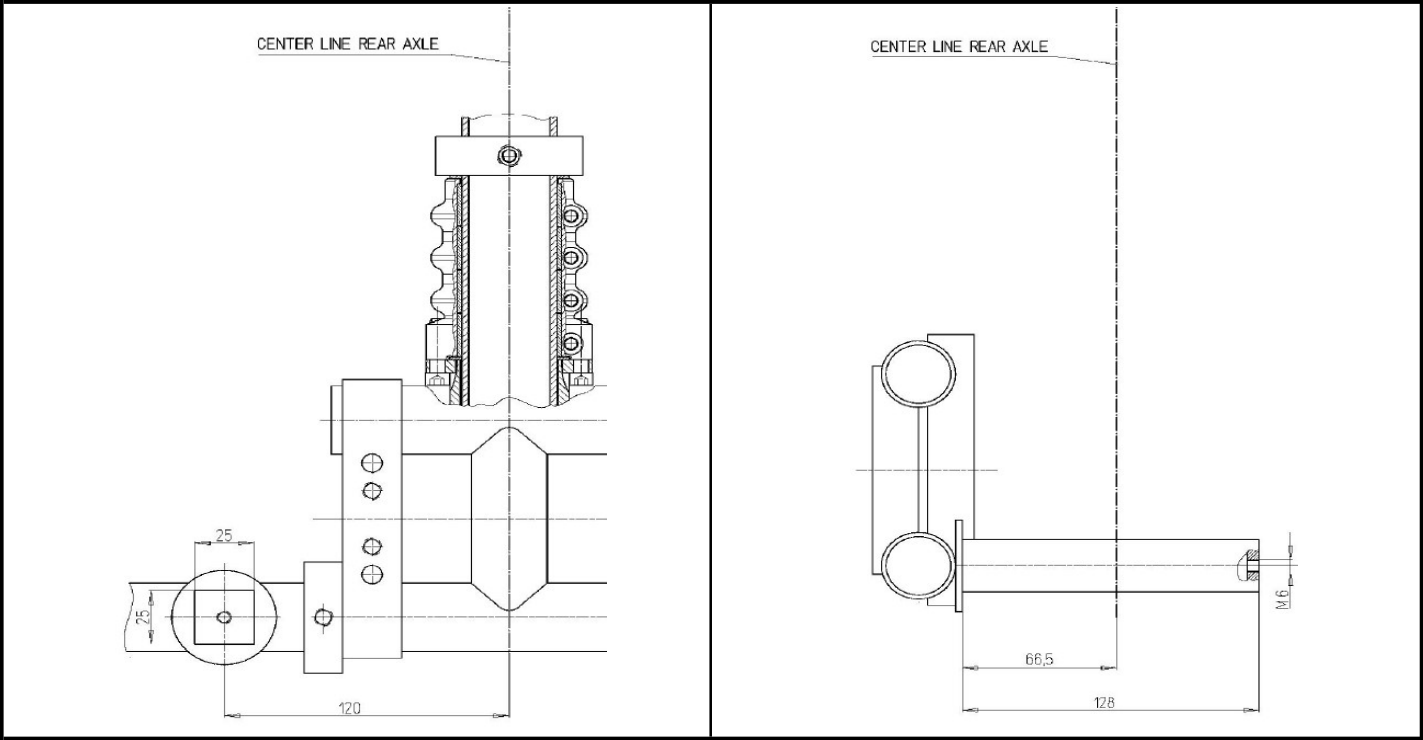


Photo of the frame from the side with the section of the support for the RTPS (Rear Tire Protection Sytstem).

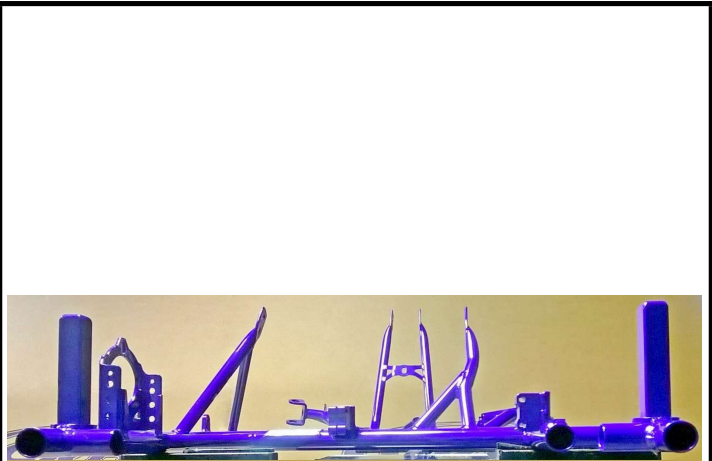


Photo of the frame from the back with the section of the support for the RTPS (Rear Tire Protection Sytstem).